



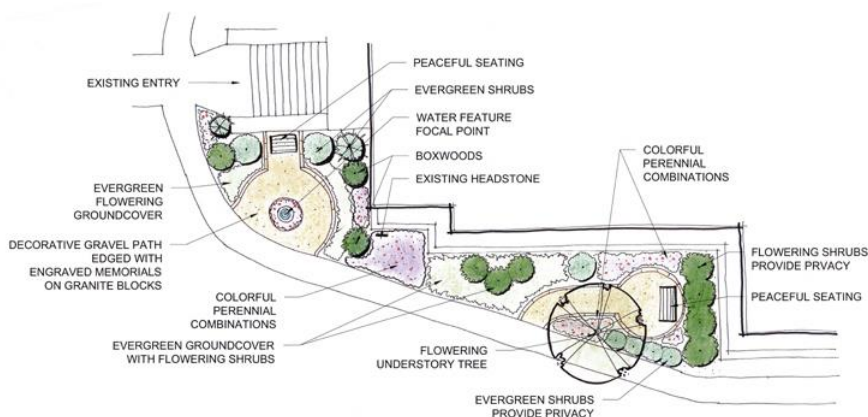
The Asbury Journal

Message from the

September 2015

Pastor

Message from the Pastor: The Memorial Garden (Phase I)



The Memorial Garden at Asbury Memorial is soon to be a reality! We are planning to begin work on the garden this fall! It will be located next to the right hand side of the sanctuary (if you are facing the front steps). The Trustees are hard at work getting the guidelines together for those who would like their cremains interred in the garden, and more details will be available very soon about the process, costs, and other details of the project. The image above is the design of Phase I of the Memorial Garden. Phase II will be completed at a later date and will feature a new sidewalk, and an expansion of the garden space along with brick and iron walls and gates around the perimeter of the garden.

There are many more pictures, designs, and information available on our website if you'd like to learn more about the Memorial Garden under the "Who We Are" tab on the homepage. Once you are there just click on the "Our Future Possibilities" menu and you can view the full set of plans and download pricing projections, etc. Stay tuned for more exciting information about the Memorial Garden in the coming weeks!

In This Issue:

Message from the Pastor.....	1
Message from the Assistant Pastor.....	2
News from the Preschool.....	2
News from the Finance Committee.....	3
Music Notes.....	3
Church Calendar.....	4-5
Volunteer Schedule.....	6
News from the Missions Committee.....	7
News from Children and Youth.....	7
Homecoming.....	8





A MESSAGE FROM THE ASSISTANT PASTOR

About one mile east of Statesville, North Carolina sits a small Lutheran church. For many years a billboard sat on the side of Highway #70, near the church. The sign, donated by one of the members who owned an advertising company, hosted an image of a beautiful butterfly sitting on a flower with these words superimposed over the image; “*Miracles Aren’t Hard to Find.*” The significance of the image and message—to let people know that every single day God sends miracles into their lives if they will only look.

During the time of Jesus, the people of Israel witnessed many miracles; the twenty-six miraculous healings, the feeding of the five thousand, Jesus walking on the water, the raising of Lazarus and Jairus’ daughter from the dead. Yet the Israelite’s were always asking for more of what they called “signs” pointing toward the promised Savior. What do you suppose it takes for people to recognize the Son of God? Maybe we have become so accustomed to science and medical breakthroughs that we fail to see the miraculous miracles or signs they represent.

Our own Hughes Chisholm is an excellent example of a series of four miracles that have taken place in his life, his family and this church. Surgeries in which doctors stopped his heart, put him on life support and repaired his tiny heart. Congregation, if we fail to see the miracle in this, I am not sure if things such as sunrises, sunsets, flowers bursting out of the earth and our four seasons could ever hope to impress us with God’s majesty. We all know of someone who can use a miracle. Let us never stop praying for miracles. The world needs all the miracles it can get. Every time one happens remember that we are seeing a preview of the kingdom of God.

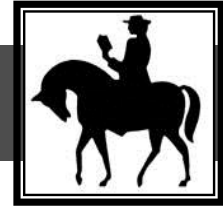
-Pastor David Warren

*If part of your Call-Em-All message seems to be cut off,
it is because of your voice mail or answering machine.
To get the complete message call [1-877-565-6456](tel:1-877-565-6456) toll free.
The complete message will be played.*

News from the North Asheville Preschool

We are off to a great start this fall with full classrooms, fresh faces and new carpet! Our new carpet that is lining the stairwell makes for smoother and softer transitions from classrooms to play space. Come and try it out!

-Madeline Moseley



News from the Finance Committee

Finance Committee Update:

	<u>For Seven (7) Months Ended July 31, 2015</u>		
	<u>Actual</u>	<u>Budget</u>	<u>Favorable/(Unfavorable) Variance</u>
Operating Funds:			
Income	\$98,942	\$113,580	\$(14,638)
Expenses	<u>113,335</u>	<u>119,881</u>	<u>6,546</u>
Net Income/(Loss)	<u>(\$14,393)</u>	<u>(\$6,301)</u>	<u>(\$8,092)</u>
Special Giving*	<u>\$7,295</u>		
*Includes Souper Bowl, ABCCM, Manna Food Bank, Memorials, Disaster Relief, Youth Missions/Activities, Bread Tin, Special offerings			

Music Notes

Handbells has rehearsals on Wednesday evenings at 6:00 pm in the sanctuary. We will be preparing service, music and Christmas holiday music. Please plan to join us in this ministry.

Adult Choir meets at 7:00 pm every Wednesday evening. We welcome new members! We are currently preparing service music, homecoming music and Christmas music. We will be doing a cantata this year as well as special music for the Christmas Eve service. Come join us!

-Sherry Bates

Asbury Memorial United Methodist Church

Church Calendar for September 2015

**Be sure to check our website calendar for any changes to the calendar.
Any meetings that change the time, location, or date
will also be communicated by a recorded phone message to those who are involved.*

Sunday	Monday	Tuesday	Wednesday	Thursday	Friday	Saturday
		1	2	3	4	5
			9:00 am-1:00 pm- Preschool [EB] 3:00 pm-6:00 pm- Church Office Hours 5:45 pm- Al-Anon Meeting [BC] 6:00 pm- Handbell Rehearsal [S] 7:00 pm- Choir Rehearsal [CR] 8:00 pm- Narcotics Anonymous [FH]	9:00 am-1:00 pm- Preschool [EB] 3:00 pm-6:00 pm- Church Office Hours 6:30 pm- Room In The Inn Meeting [St. Eugene's Catholic Church] 7:00 pm- Lay Leadership Meeting [CO]	9:00 am-1:00 pm- Preschool [EB] 8:00 pm- Alcoholics Anonymous [FH]	
		<i>CHURCH OFFICE CLOSED</i>	<i>BULLETIN DEADLINE</i>		<i>CHURCH OFFICE CLOSED</i>	<i>CHURCH OFFICE CLOSED</i>
6	7	8	9	10	11	12
9:45 am- Sunday School 11:00 am- Worship [S] 8:00 pm- Alcoholics Anonymous [FH]	<i>Happy Labor Day</i> 7:00 am- Emmaus Group [YR] 3:00 pm-6:00 pm- Church Office Hours <i>PRESCHOOL CLOSED</i>	9:00 am-1:00 pm- Preschool [EB]	9:00 am-1:00 pm- Preschool [EB] 3:00 pm-6:00 pm- Church Office Hours 5:45 pm- Al-Anon Meeting [BC] 6:00 pm- Handbell Rehearsal [S] 7:00 pm- Choir Rehearsal [CR] 8:00 pm- Narcotics Anonymous [FH]	9:00 am-1:00 pm- Preschool [EB] 3:00 pm-6:00 pm- Church Office Hours 7:00 pm- SPRC Meeting [BC]	9:00 am-1:00 pm- Preschool [EB] 8:00 pm- Alcoholics Anonymous [FH]	
		<i>CHURCH OFFICE CLOSED</i>	<i>BULLETIN DEADLINE</i>		<i>CHURCH OFFICE CLOSED</i>	<i>CHURCH OFFICE CLOSED</i>
13	14	15	16	17	18	19
9:45 am- Sunday School 11:00 am- Worship [S] 8:00 pm- Alcoholics Anonymous [FH]	7:00 am- Emmaus Group [YR] 9:00 am-1:00 pm- Preschool [EB] 3:00 pm-6:00 pm- Church Office Hours	9:00 am-1:00 pm- Preschool [EB]	9:00 am-1:00 pm- Preschool [EB] 3:00 pm-6:00 pm- Church Office Hours 5:45 pm- Al-Anon Meeting [BC] 6:00 pm- Handbell Rehearsal [S] 7:00 pm- Choir Rehearsal [CR] 8:00 pm- Narcotics Anonymous [FH]	9:00 am-1:00 pm- Preschool [EB] 3:00 pm-6:00 pm- Church Office Hours	9:00 am-1:00 pm- Preschool [EB] 8:00 pm- Alcoholics Anonymous [FH]	
		<i>CHURCH OFFICE CLOSED</i>	<i>BULLETIN DEADLINE</i>		<i>CHURCH OFFICE CLOSED</i>	<i>CHURCH OFFICE CLOSED</i>

Sunday	Monday	Tuesday	Wednesday	Thursday	Friday	Saturday
20	21	22	23	24	25	26
9:45 am-Sunday School 9:45 am-Parent/Teacher Activity Meeting 11:00 am-Worship [S] 8:00 pm-Alcoholics Anonymous [FH] <i>Room In The Inn</i>	7:00 am-Emmaus Group [YR] 9:00 am-1:00 pm-Preschool [EB] 3:00 pm-6:00 pm-Church Office Hours <i>Room In The Inn</i> NEWSLETTER DEADLINE	9:00 am-1:00 pm-Preschool [EB] <i>Room In The Inn</i> CHURCH OFFICE CLOSED	9:00 am-1:00 pm-Preschool [EB] 3:00 pm-6:00 pm-Church Office Hours 5:45 pm-Al-Anon Meeting [BC] 6:00 pm-Handbell Rehearsal [S] 7:00 pm-Choir Practice [CR] 8:00 pm-Narcotics Anonymous [FH] <i>Room In The Inn</i> BULLETIN DEADLINE	9:00 am-1:00 pm-Preschool [EB] 3:00 pm-6:00 pm-Church Office Hours <i>Room In The Inn</i>	9:00 am-1:00 pm-Preschool [EB] 8:00 pm-Alcoholics Anonymous [FH] <i>Room In The Inn</i> CHURCH OFFICE CLOSED	<i>Room In The Inn</i> CHURCH OFFICE CLOSED
27	28	29	30			
9:45 am-Sunday School 11:00 am-Worship [S] 8:00 pm-Alcoholics Anonymous [FH] <i>Room In The Inn</i>	7:00 am-Emmaus Group [YR] 9:00 am-1:00 pm-Preschool [EB] 3:00 pm- 6:00 pm-Church Office Hours 6:30 pm-Friendship Circle [BC]	9:00 am-1:00 pm-Preschool [EB] CHURCH OFFICE CLOSED	9:00 am-1:00 pm-Preschool [EB] 3:00 pm-6:00 pm-Church Office Hours 5:45 pm-Al-Anon Meeting [BC] 6:00 pm-Handbell Rehearsal [S] 7:00 pm-Choir Rehearsal [CR] 8:00 pm-Narcotics Anonymous [FH] BULLETIN DEADLINE			
FH=Fellowship Hall S=Sanctuary BC=Brown Chapel EB=Educational Building YR=Youth Room GE=Givens Estate PO=Pastor's Office CO=Church Office TBD=To Be Determined UR=Upper Room Sunday School Classroom				<u>Important Dates in October</u> October 11 th - Homecoming Sunday October 12 th - Columbus Day Holiday October 31 st - Halloween		
<u>September Birthdays</u> Tom Stewart - Sept 2 nd Mike Young - Sept 3 rd Don Jackson - Sept 11 th Elaine Collins - Sept 14 th Elaine Poovey - Sept 14 th Randy Rice - Sept 20 th				<u>September Birthdays</u> Agya Boakye-Boaten II - Sept 21 st Kay Dechant - Sept 21 st SueLane Muesing - Sept 22 nd Ben Jackson - Sept 26 th Rachael Young - Sept 27 th		



Asbury Memorial United Methodist Church Volunteer Schedule September 2015						
Date	Communion Servers	Lock-Up Volunteer	Counting Team	Ushers	Greeters	Sanctuary Stewards
9.6.2015	Curtis Goforth Judy Rich Sallyanne McVay Doug Tallent	Mark Smith (primary) Larry Wilson (secondary)	Rebecca Tucker Mary Loomis-Molloy	Don Jackson Davie Jackson Don McGeary TBD	Geri Allison Jessica Withers	Bruce Kidder Elaine Price
9.13.2015	NA	Mark Smith (primary) Larry Wilson (secondary)	Merritt Moseley SueLane Muesing	Gary Tweed Toni Tweed Robert Wiltshire Debbie Wiltshire	Claire Bailey TBD	Laurel Bishop Cynthia Stewart
9.20.2015	NA	Mark Smith (primary) Larry Wilson (secondary)	Doug Tallent Janie Wilson	Mike Rice Sherry Rice Julie Niwinski TBD	Ann Young Toni Tweed	Steve Rich Judy Rich
9.27.2015	NA	Mark Smith (primary) Larry Wilson (secondary)	Diane Arnold Mardy Murphy	William Withers Jessica Withers Bud Allison Geri Allison	Judy Rich Laurel Bishop	Arlee Banks Ellen Banks

Asbury Memorial United Methodist Church Volunteer Schedule September 2015					
Date	Acolyte(s)	Nursery Volunteers	Children's Church	Children's Message	Lector
9.6.2015	Barfuo Boakye-Boaten	TBD	Heather Post	Curtis Goforth	Curtis Goforth
9.13.2015	Alana Bridger	Laurel Bishop Jessica Withers	Sallyanne McVay	Margaret Tickle	Janie Wilson
9.20.2015	Lylah Goforth	John Stewart Julie Niwinski	Claire Bailey	Sallyanne McVay	Rick Morehead
9.27.2015	Haley Phillips	Davie Jackson Don Jackson	Judi Harvin	Sallyanne McVay	Madeline Moseley

Volunteer Coordinators:

Counting Team:

Sue Lane Muesing

slmue@aol.com

H: (828) 255-8547

Lock-Up Team:

Curtis Goforth

curtis@asburymethodist.org

H: (828) 484-8540

Ushers:

Gary Hutchins

NA

H: (828) 683-1948

Greeters:

Cynthia Stewart

crameystew@hotmail.com

H: (828) 251-9210

Sanctuary Stewards:

Margaret Tickle

margarettickle@aol.com

H: (828) 252-9887

Acolytes:

Sallyanne McVay

sallyanne@asburymethodist.org

C: (828) 230-4065

Nursery Workers:

Davie Jackson

daviejackson@hotmail.com

H: (828) 645-2928

Children's Church:

Sallyanne McVay

sallyanne@asburymethodist.org

C: (828) 230-4065

Children's Sermon:

Sallyanne McVay

sallyanne@asburymethodist.org

C: (828) 230-4065

Communion Servers:

Curtis Goforth

curtis@asburymethodist.org

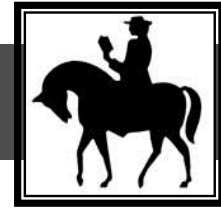
H: (828) 484-8540

Scripture Readers:

Curtis Goforth

curtis@asburymethodist.org

H: (828) 484-8540



News from the Missions Committee

The September Bread Tin offerings are for the Cherokee United Methodist Church's Poverty/Outreach Ministry, an Advance Special designated by the Western North Carolina Conference. The church's mission is to be "The People of God called United Methodist serving on the Qualla Indian Boundary of the Eastern Band of the Cherokee." The Church explains,

Every year, Cherokee United Methodist Church welcomes mission project teams from around the country. The teams travel to Cherokee to experience the culture and join in missions with Cherokee UMC and it's people. There are projects for everyone, whether it's building, roofing, painting or just cleaning. We also try to involve our indigenous people in ministry alongside the groups to enhance the personal experience.

Our Bread Tin giving will help support the Cherokee church in its hosting of mission teams and thus provide a multiplier effect to their efforts.

Please continue to add beef stew to your grocery list. We are well on our way to collecting 2015 pounds of beef stew and any other meal-in-a-can for MANNA FoodBank. Our collections so far in 2015 total 1400 pounds (food and monetary donations). Kudos and Thank you for your support!

News from Children and Youth

New 3rd Graders will receive Bibles from the church on Sunday, September 20. If you know of any Third Graders who we should consider including in this special time, please call Sallyanne, 230-4065.

Summer is over School has started, Please make Sunday School and Worship apart of your Week, whenever possible. The Godly Play teachers miss seeing all the children together. The New Sunday School Year starts Sunday, September 6 with full emphasis on getting everyone back in gear on Sunday, September 13.

Sunday, September 20 9:45 AM Parent & Teacher meeting about Children's Activities/Choir, Godly Play and _____?! What would you like to bring to the discussion table? Please send ideas, concerns etc. to Sallyanne to add to the agenda.

CHILDREN'S CHOIR to prepare for Homecoming. Sunday, September 27 all children are invited to participate in Children's Church with Judi Harvin as she begins teaching the song the children will sing for Homecoming. The Children's Choir will also meet on Wednesdays, September 30 and October 7 at 5:45 -6:45 PM, light supper included. Homecoming is October 11 and we hope all the children will be present to sing that day.

Homecoming 2015

Please make plans to join us as we celebrate our 214th Homecoming Worship Service on Sunday, October 11th at 11:00 am. Our guest preacher this year will be our District Superintendent, Rev. Dr. John Boggs, and you will be treated to all sorts of special music by our choir, the men's chorus, and the handbell choir! Join us after the service in the Fellowship Hall for a covered dish luncheon. Members are asked to bring an entree, side, or dessert to share with the congregation and the church will be providing the bread and beverages. Spread the word and invite a friend to join you for this special service as we celebrate 214 years of ministry in this amazing place!

The N.O.W Committee is seeking help with Clean-Up for the Homecoming Meal on Sunday, October 11. If you would be willing to clear tables, scrape plates, wash dishes, or put away clean dishes – OR donate to the purchase of paper products; PLEASE Call the church office 253-0765, Sallyanne 230-4065 or Mardy Murphy 776-1117.



Asbury Memorial United Methodist Church
171 Beaverdam Rd.
Asheville, NC 28804-2514